

## Photovoltaic system, synthetic waterproofing, BauderPIR tapered insulation, trapezoidal sheet metal substrate

---

Photovoltaics:

**BauderSOLAR UK GD**

---

Capping sheet (mechanically secured):

**BauderTHERMOPLAN T 15/18/20**

---

Linear drainage (optional, not shown):

**BauderPIR T LES**

---

Insulation material (bonded):

**BauderPIR T (Tapered)**

---

Insulation material adhesive:

**Bauder foam adhesive**

---

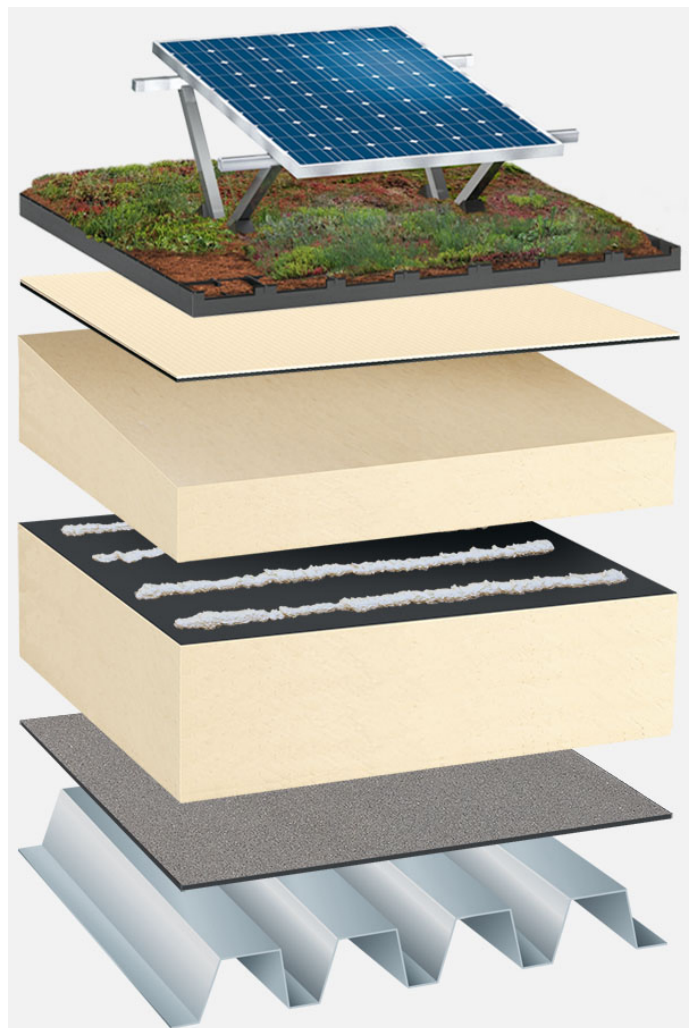
Insulation material (mechanically secured):

**BauderPIR FA**

---

Vapour barrier (cold self-adhesive):

**BauderTEC KSD Mica**



System build-up: TP\_PIR-FA\_PIR-TG\_T\_01\_PVGD

The flat roof structure shown is a recommendation based on the selected parameters. Object-specific features and legal regulations must be clarified and adhered to in advance. This recommendation does not replace a consultation with a Bauder specialist consultant or Bauder Application Technology.

### Notes:

Created with the Bauder Flat Roof Navigator ([www.roof-navigator.eu](http://www.roof-navigator.eu))