

Photovoltaic system, extensive roof planting, bitumen waterproofing with root resistance, BauderPIR tapered insulation, wooden substrate

Photovoltaics:

BauderSOLAR UK GD

Capping sheet (torched-on):

BauderSMARAGD

First layer (torched-on):

BauderTHERM UL 50

Linear drainage (optional, not shown):

BauderPIR T LES

Insulation material (bonded):

BauderPIR T (Tapered)

Insulation material adhesive:

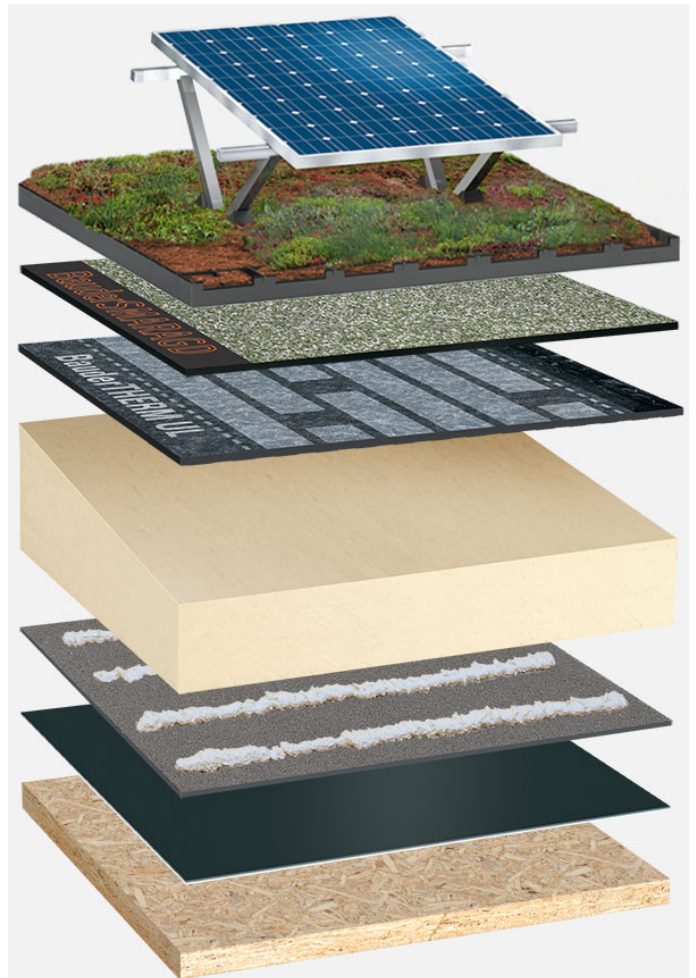
Bauder foam adhesive

Vapour barrier (torched-on):

BauderFLEX DNA

Separating layer (mechanically secured):

BauderFLEX TA 600



System build-up: HP_PIR-TG_S_01_PVGD

The flat roof structure shown is a recommendation based on the selected parameters. Object-specific features and legal regulations must be clarified and adhered to in advance. This recommendation does not replace a consultation with a Bauder specialist consultant or Bauder Application Technology.

Notes:

Created with the Bauder Flat Roof Navigator (www.roof-navigator.eu)