

## Photovoltaic system, bitumen waterproofing, BauderPIR tapered insulation, wooden substrate

---

Photovoltaics:

**BauderSOLAR UK FD**

---

Capping sheet (torched-on):

**BauderKARAT**

---

First layer (torched-on):

**BauderFLEX G4E**

---

Linear drainage (optional, not shown):

**BauderPIR T LES**

---

Insulation material (bonded):

**BauderPIR T (Tapered)**

---

Insulation material adhesive:

**Bauder foam adhesive**

---

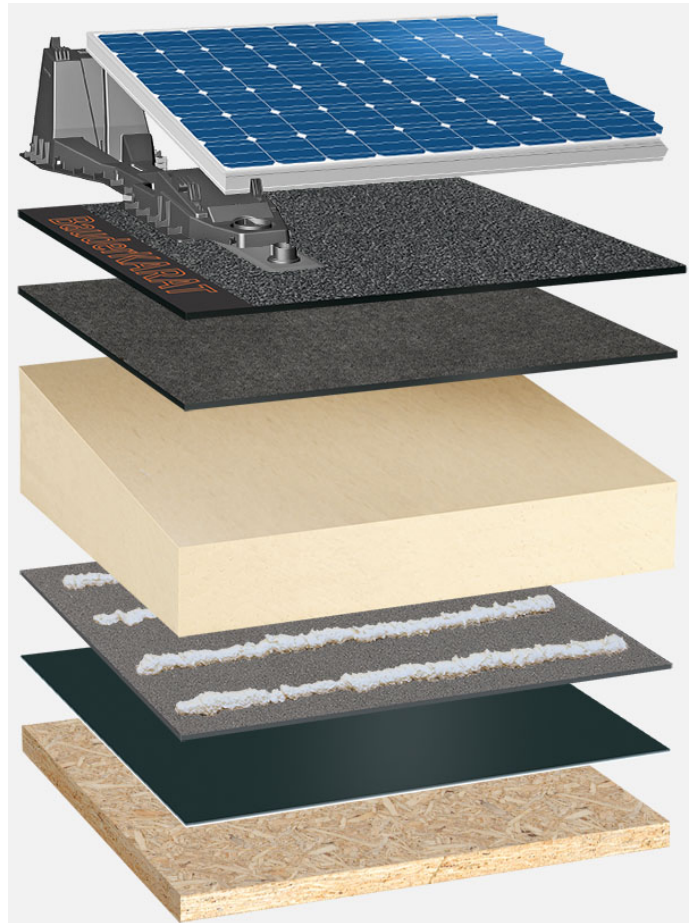
Vapour barrier (torched-on):

**BauderFLEX DNA**

---

Separating layer (mechanically secured):

**BauderFLEX TA 600**



System build-up: HP\_PIR-TG\_K\_01\_PVFD

The flat roof structure shown is a recommendation based on the selected parameters. Object-specific features and legal regulations must be clarified and adhered to in advance. This recommendation does not replace a consultation with a Bauder specialist consultant or Bauder Application Technology.

Notes:

Created with the Bauder Flat Roof Navigator ([www.roof-navigator.eu](http://www.roof-navigator.eu))