

Photovoltaic system, bitumen waterproofing, BauderPIR thermal insulation, wooden substrate with a slope of at least 2%

Photovoltaics:

BauderSOLAR UK FD

Capping sheet (torched-on):

BauderKARAT

First layer (torched-on):

BauderTHERM UL 50

Linear drainage (optional, not shown):

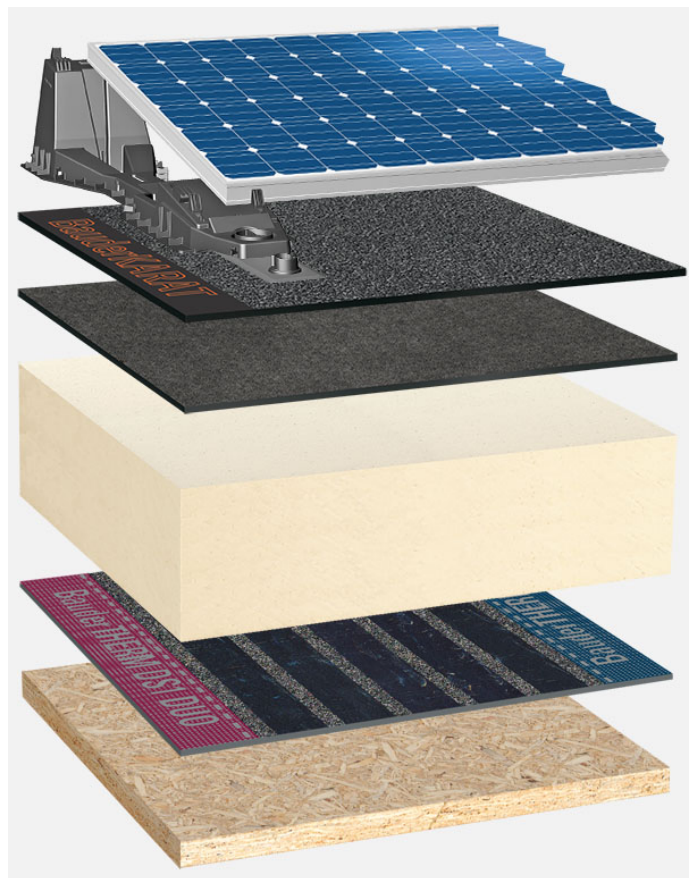
BauderPIR T LES

Insulation material (torch-welded):

BauderPIR M

Vapour barrier (mechanically secured):

BauderTHERM DS 1 DUO



System build-up: HG_PIR-MF_K_01_PVFD

The flat roof structure shown is a recommendation based on the selected parameters. Object-specific features and legal regulations must be clarified and adhered to in advance. This recommendation does not replace a consultation with a Bauder specialist consultant or Bauder Application Technology.

Notes:

Created with the Bauder Flat Roof Navigator (www.roof-navigator.eu)