

Photovoltaic system, synthetic waterproofing,
BauderPIR thermal insulation, wooden substrate with a
slope of at least 2%

Photovoltaics:

BauderSOLAR UK GD

Capping sheet (mechanically secured):

BauderTHERMOPLAN T 15/18/20

Linear drainage (optional, not shown):

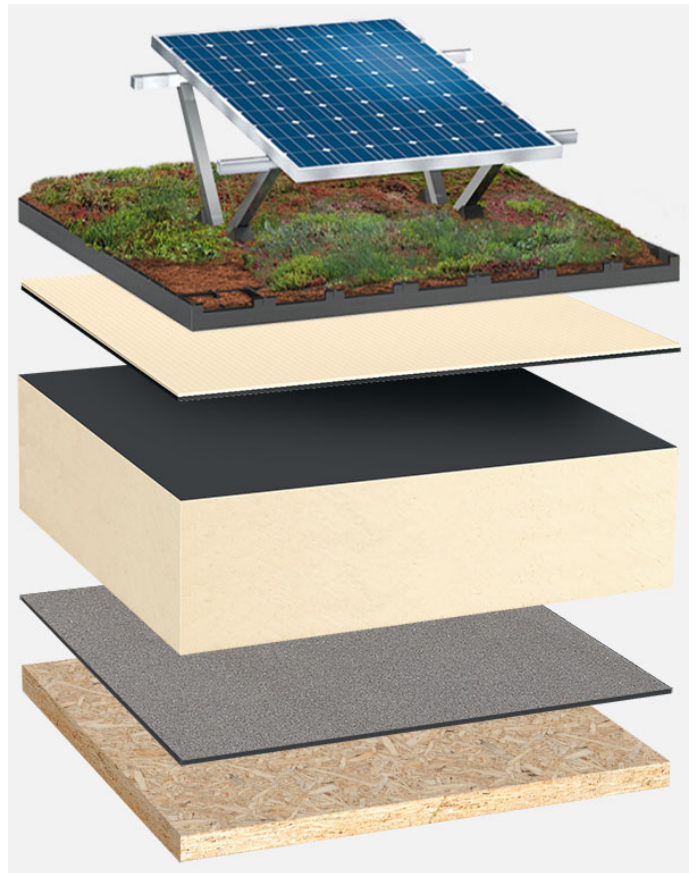
BauderPIR T LES

Insulation material (mechanically secured):

BauderPIR FA

Vapour barrier (mechanically secured):

BauderTEC KSD Mica



System build-up: HG_PIR-FA_T_01_PVGD

The flat roof structure shown is a recommendation based on the selected parameters. Object-specific features and legal regulations must be clarified and adhered to in advance. This recommendation does not replace a consultation with a Bauder specialist consultant or Bauder Application Technology.

Notes:

Created with the Bauder Flat Roof Navigator (www.roof-navigator.eu)