

Photovoltaic system, extensive roof planting, bitumen waterproofing with root resistance, BauderPIR thermal insulation, wooden substrate with a slope of at least 2%

Photovoltaics:

BauderSOLAR UK GD

Capping sheet (torched-on):

BauderSMARAGD

First layer (cold self-adhesive):

BauderTEC KSA DUO 35

Linear drainage (optional, not shown):

BauderPIR T LES

Insulation material (bonded):

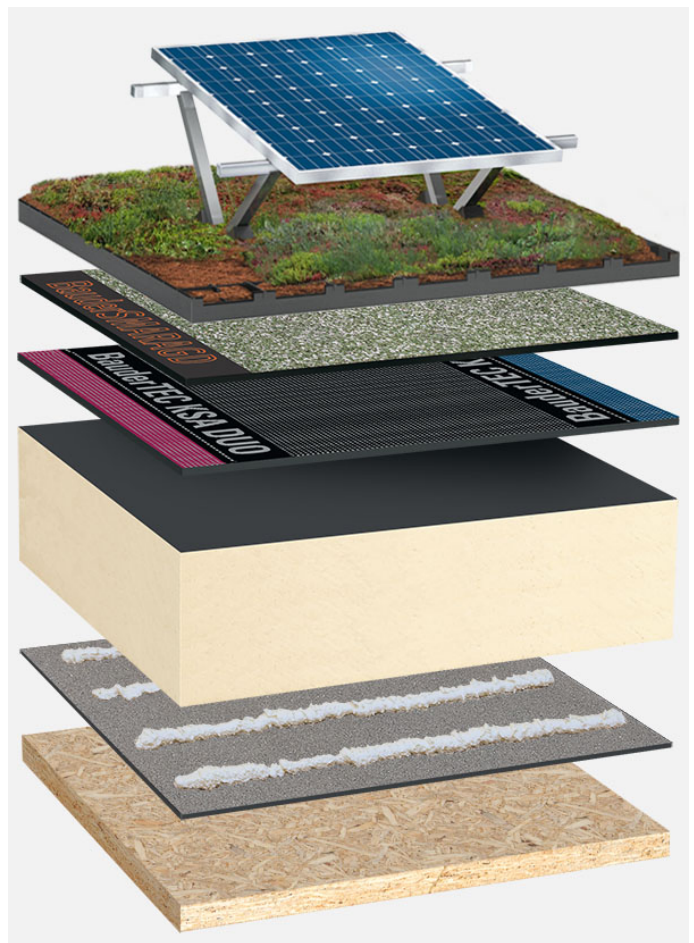
BauderPIR FA

Insulation material adhesive:

Bauder foam adhesive

Vapour barrier (mechanically secured):

BauderTEC KSD Mica



System build-up: HG_PIR-FA_S_01_PVGD

The flat roof structure shown is a recommendation based on the selected parameters. Object-specific features and legal regulations must be clarified and adhered to in advance. This recommendation does not replace a consultation with a Bauder specialist consultant or Bauder Application Technology.

Notes:

Created with the Bauder Flat Roof Navigator (www.roof-navigator.eu)