

Photovoltaic system, extensive planting, bitumen waterproofing with root resistance, without thermal insulation, concrete substrate with a slope of at least 2%

---

Photovoltaics:

**BauderSOLAR UK GD**

---

Capping sheet (torched-on):

**BauderSMARAGD**

---

First layer (applied to hot-melt bitumen):

**BauderKOMPAKT ULK**

---

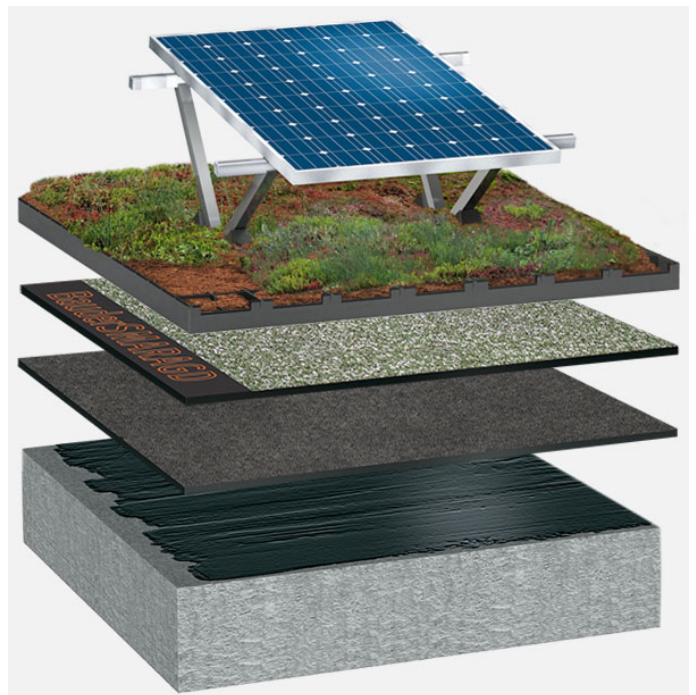
Hot-melt bitumen:

**BauderFLEX adhesive compound**

---

Primer:

**Burkolit V**



System build-up: BG\_S\_03\_PVGD

The flat roof structure shown is a recommendation based on the selected parameters. Object-specific features and legal regulations must be clarified and adhered to in advance. This recommendation does not replace a consultation with a Bauder specialist consultant or Bauder Application Technology.

Notes:

---

Created with the Bauder Flat Roof Navigator ([www.roof-navigator.eu](http://www.roof-navigator.eu))