

Photovoltaic system, bitumen waterproofing, BauderPIR thermal insulation, concrete substrate with a slope of at least 2%

---

Photovoltaics:

**BauderSOLAR UK FD**

---

Capping sheet (torched-on):

**BauderKARAT**

---

First layer (torched-on):

**BauderFLEX G4E**

---

Linear drainage (optional, not shown):

**BauderPIR T LES**

---

Insulation material (bonded):

**BauderPIR M**

---

Vapour barrier (torched-on):

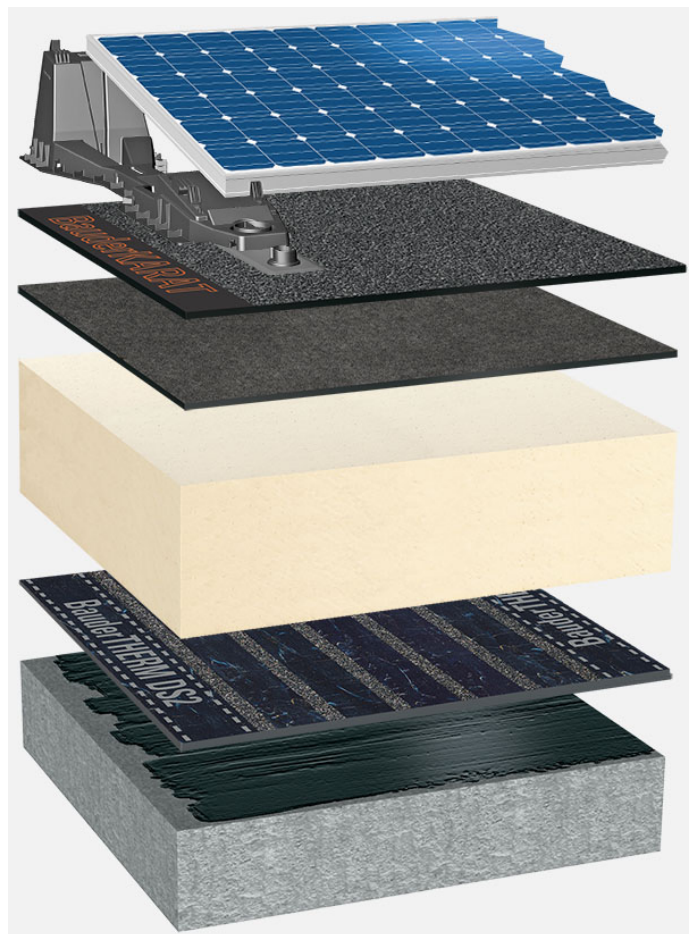
**BauderTHERM DS 2**

---

Primer:

**Burkolit V**

---



System build-up: BG\_PIR-MF\_K\_01\_PVFD

The flat roof structure shown is a recommendation based on the selected parameters. Object-specific features and legal regulations must be clarified and adhered to in advance. This recommendation does not replace a consultation with a Bauder specialist consultant or Bauder Application Technology.

Notes:

Created with the Bauder Flat Roof Navigator ([www.roof-navigator.eu](http://www.roof-navigator.eu))