

Photovoltaic system, synthetic waterproofing,  
BauderPIR thermal insulation, concrete substrate with a  
slope of at least 2%

---

Photovoltaics:

**BauderSOLAR UK FD**

---

Capping sheet (mechanically secured):

**BauderTHERMOPLAN T 15/18/20**

---

Linear drainage (optional, not shown):

**BauderPIR T LES**

---

Insulation material (mechanically secured):

**BauderPIR FA**

---

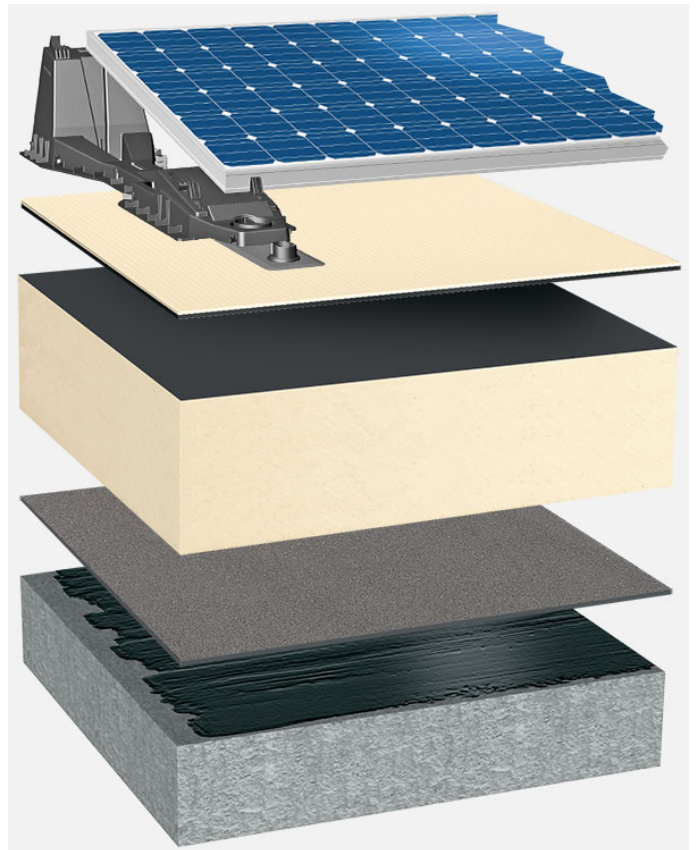
Vapour barrier (torched-on):

**BauderFLEX DNA**

---

Primer:

**Burkolit V**



System build-up: BG\_PIR-FA\_T\_01\_PVFD

The flat roof structure shown is a recommendation based on the selected parameters. Object-specific features and legal regulations must be clarified and adhered to in advance. This recommendation does not replace a consultation with a Bauder specialist consultant or Bauder Application Technology.

Notes:

---

Created with the Bauder Flat Roof Navigator ([www.roof-navigator.eu](http://www.roof-navigator.eu))