

Photovoltaic system, synthetic waterproofing,
BauderPIR thermal insulation, concrete substrate with a
slope of at least 2%

Photovoltaics:

BauderSOLAR UK GD

Capping sheet (applied loosely):

**BauderTHERMOPLAN T 15/18/20
V**

Insulation material (mechanically secured):

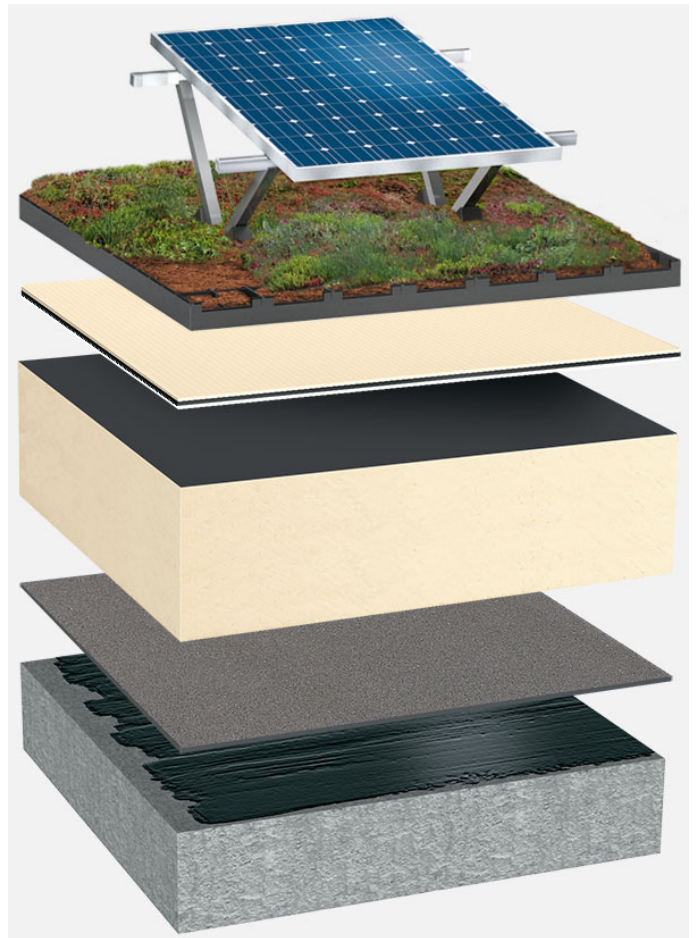
BauderPIR FA

Vapour barrier (torched-on):

BauderFLEX DNA

Primer:

Burkolit V



System build-up: BG_PIR-FA_TV_01_PVGD

The flat roof structure shown is a recommendation based on the selected parameters. Object-specific features and legal regulations must be clarified and adhered to in advance. This recommendation does not replace a consultation with a Bauder specialist consultant or Bauder Application Technology.

Notes:

Created with the Bauder Flat Roof Navigator (www.roof-navigator.eu)